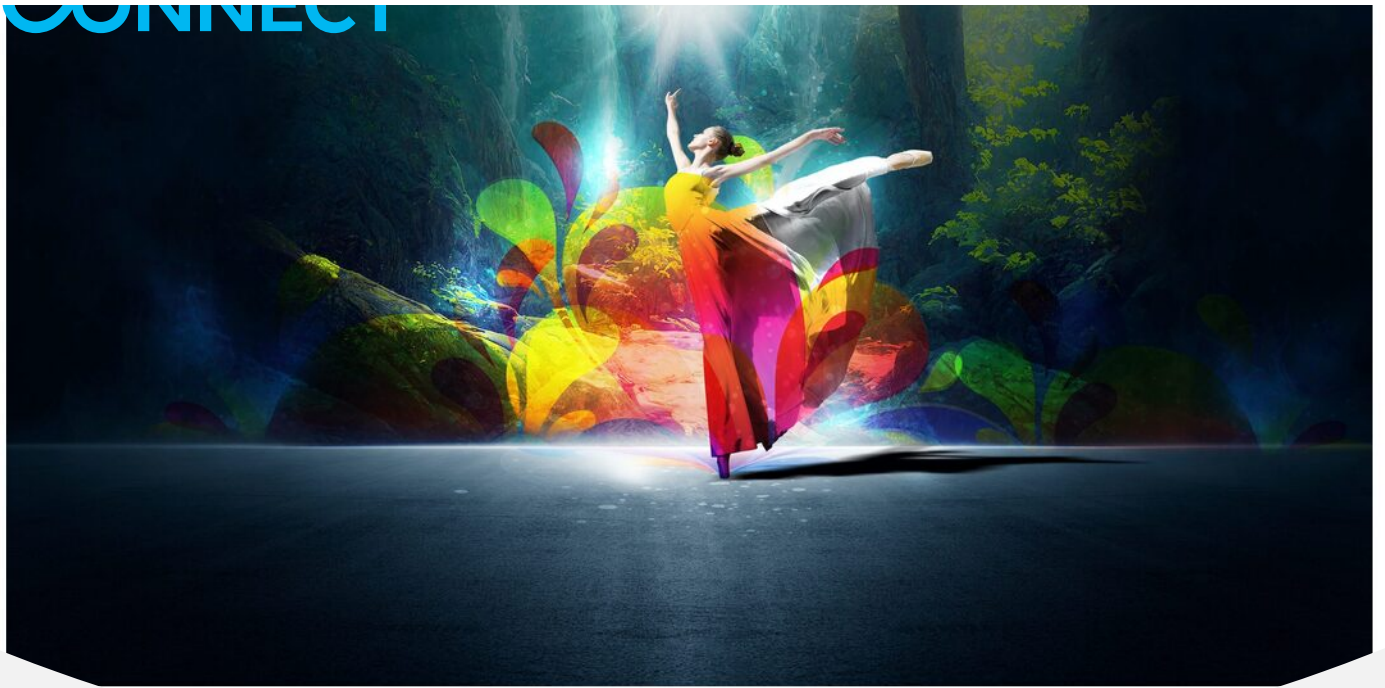


CONNECT



## Expand Production Possibilities and Revolutionize Workflow with Next-Generation 1-Chip DLP™ 4K Projectors

### PT-REQ15

The next-generation PT-REQ15 1-Chip DLP™ 4K Laser Projector is designed to streamline productions and expand the endless possibilities of entertainment by delivering exceptional, highly engaging immersive experiences with up to 15,000lm brightness, 4K resolution, and 240 Hz projection capability.

#### Key Features

Inspire Wonder with Spectacular 4K Visuals

Compact Design Simplifies Complex Workflows

Supreme Reliability for Long-term Operation





## PT-REQ15

<https://latam.connect.panasonic.com/mx/en/products/projectors/pt-req15>

<b>Projector type</b>	1-Chip DLP™ projectors
<b>DLP™ Chip   Panel Size</b>	0.8 in diagonal (16:10 aspect ratio)
<b>DLP™ Chip   Display Method</b>	DLP™ chip x 1, DLP™ projection system
<b>DLP™ chip   Number of Pixels</b>	2,304,000 (1920 x 1200 pixels)
<b>Light Source</b>	Laser Diode
<b>Light Output*1 *2</b>	15,000 lm / 15,500 lm (Center)*3
<b>Screen size [diagonal]</b>	70–1000 inches (with ET-C1S600)
<b>Resolution</b>	4K (3840 x 2400 pixels) (Quad Pixel Drive: ON)
<b>Contrast Ratio*1</b>	25,000:1 (Full On/Full Off, Dynamic Contrast [3])
<b>Time until light output declines to 50 %*4</b>	20,000 hours (NORMAL/QUIET), 24,000 hours (ECO)
<b>Center-to-corner zone ratio*1</b>	90%
<b>Lens</b>	PT-REQ15 : Powered zoom (throw ratio 1.36–2.10:1 for supplied lens), powered focus; PT-REQ15L : Optional powered zoom/focus lenses
<b>Lens shift   Vertical(From the origin point of the lens mounter)</b>	±60 % (with ET-C1W400/W500/S600/T700), ±50 % (with ET-C1W300/U100)
<b>Lens shift   Horizontal(From the origin point of the lens mounter)</b>	±29 % (with ET-C1W400/W500/S600/T700), ±23 % (with ET-C1W300/U100)
<b>Keystone Correction Range</b>	Vertical: ±40 ° (±5 ° with ET-C1U100; ±10 ° with ET-C1W300; ±16 ° with ET-C1W400; ±22 ° with ET-C1W500), Horizontal: ±40 ° (±3 ° with ET-C1U100; ±5 ° with ET-C1W300; ±10 ° with ET-C1W400; ±15 ° with ET-C1W500)
<b>Installation</b>	Ceiling/floor, front/rear, free 360-degree installation
<b>Terminals   HDMI™ 1/2 IN</b>	HDMI™ x 2 (Deep Color, compatible with HDCP 2.3, 4K/60p signal input)
<b>Terminals   DisplayPort™</b>	DisplayPort™ x 1 (Deep Color, compatible with HDCP 2.3, 4K/60p signal input)
<b>Terminals   Multi Sync In</b>	BNC x 1
<b>Terminals   Multi Sync Out</b>	BNC x 1
<b>Terminals   Serial In</b>	D-sub 9-pin (female) x 1 for external control (RS-232C compliant)
<b>Terminals   Serial Out</b>	D-sub 9-pin (male) x 1 for link control (RS-232C compliant)
<b>Terminals   REMOTE 1 IN</b>	M3 stereo mini-jack x 1 for wired remote control
<b>Terminals   REMOTE 1 OUT</b>	M3 stereo mini-jack x 1 for link control (for wired remote control)
<b>Terminals   Remote 2 In</b>	D-sub 9-pin (female) x 1 for external control (parallel)
<b>Terminals   LAN</b>	RJ-45 x 1 for network connection, PjLink™ (Class 2) compatible, 10Base-T/100Base-TX, Art-Net compatible
<b>Terminals   USB</b>	USB connector (Type A) x 1 for optional AJ-WM50 Series Wireless Module/USB memory
<b>Terminals   DC Out</b>	USB Type A x 1 (for power supply, DC 5 V, 2 A)
<b>Terminals   Expansion Slot</b>	Open slot for for function boards, Intel® SDM compatible
<b>Protocol versions</b>	IPv4, IPv6*5
<b>Power Supply</b>	AC 100–240 V, 50/60 Hz
<b>Power Consumption*6   On-mode power consumption (Operating mode) Nomal</b>	985 W (AC 100–120 V), 940 W (AC 200–240 V)
<b>Power Consumption*6   On-mode power consumption (Operating mode) ECO</b>	765 W (AC 100–120 V), 735 W (AC 200–240 V)
<b>Power Consumption*6   On-mode power consumption (Operating mode) QUIET</b>	760 W (AC 100–120 V), 730 W (AC 200–240 V)
<b>Operation noise*1</b>	42 dB (NORMAL/ECO), 38 dB (QUIET)
<b>Dimensions (W x H x D)</b>	PT-REQ15 : 498 x 212 x 648 mm (19 19/32" x 8 11/32" x 25 1/2") (With feet at shortest position)  PT-REQ15L : 498 x 212 x 538 mm (19 19/32" x 8 11/32" x 21 3/16") (With feet at shortest position)
<b>Operating Environment</b>	Operating temperature: 0–45 °C (32–113 °F)*9, operating humidity: 10–80 % (no condensation)
<b>Applicable Software</b>	Logo Transfer Software*10, Multi Monitoring & Control Software, Projector Network Setup Software, Real-Time Tracking Projection-Mapping System, Geometry Manager Pro, Smart Projector Control for iOS/Android™
<b>Control function via LAN</b>	Crestron Connected™ V2, Crestron XiO Cloud™, Art-Net DMX, AMX® DD, and PjLink™ (Class 2)

<b>Note</b>	<p>*1 Measurement, measuring conditions, and method of notation all comply with ISO/IEC 21118: 2020 international standards. Value is the average of all products when shipped. *2 When [OPERATING MODE] is set to [NORMAL]. *3 Average light output value of all shipped products measured at center of screen in [NORMAL] Mode. *4 Around this time, light output will have decreased by approximately 50 %. IEC62087: 2008 Broadcast Contents, Dynamic Contrast [3], temperature 35 °C (95 °F), elevation 700 m (2,297 ft) with 0.15 mg/m<sup>3</sup> of airborne particulate matter. Estimated time until light output declines to 50 % varies depending on the environment. *5 Optional AJ-WM50 Series Wireless Module is not compatible with IPv6. *6 Measurement, measuring conditions, and method of notation all comply with ISO/IEC 21118: 2020 international standards. On-mode power consumption measured at 25 °C (77 °F) operating temperature at an altitude of 700 m (2,297 ft). *7 This value has included a maximum power consumption of 80 W when using a function board. *8 Average value. May differ depending on the actual unit. *9 When the optional AJ-WM50 Series wireless module is attached, the operating temperature range becomes 0–40 °C (32–104 °F). The operating environment temperature should be between 0 °C (32 °F) and 40 °C (104 °F) if the projector is used at an altitude between 1,400 m (4,593 ft) and 4,200 m (13,780 ft). *10 Excluding the REQ15. Software replaced with equivalent functions in the Web Control UI.</p>
<b>Weight*8</b>	<p>PT-REQ15 : Approx. 28.7 kg (63.27 lbs) (with supplied lens)  PT-REQ15L : Approx. 27.0 kg (59.52 lbs) (without lens)  1,140 W (11.5–4.7 A) (1,150 VA) (Power consumption is 1,090 W at AC 200–240 V)</p>